



*a stereotype
is an image*

*a stereotype
is an image*

*a stereotype
is an image perpetuated*

*a stereotype
is an image perpetuated*

*a stereotype
is an image perpetuated*

*a stereotype
is an image perpetuated*

*a stereotype
is an image perpetuated
without change.*

*a stereotype
is an image perpetuated
without change.*

*a stereotype
is an image perpetuated
without change.*

*a stereotype
is an image perpetuated
without change.*

*a stereotype
is an image perpetuated
without change.*

*a stereotype
is an image perpetuated
without change.*

immersion

*a stereotype
is an image perpetuated
without change.*

immersion

*a stereotype
is an image perpetuated
without change.*

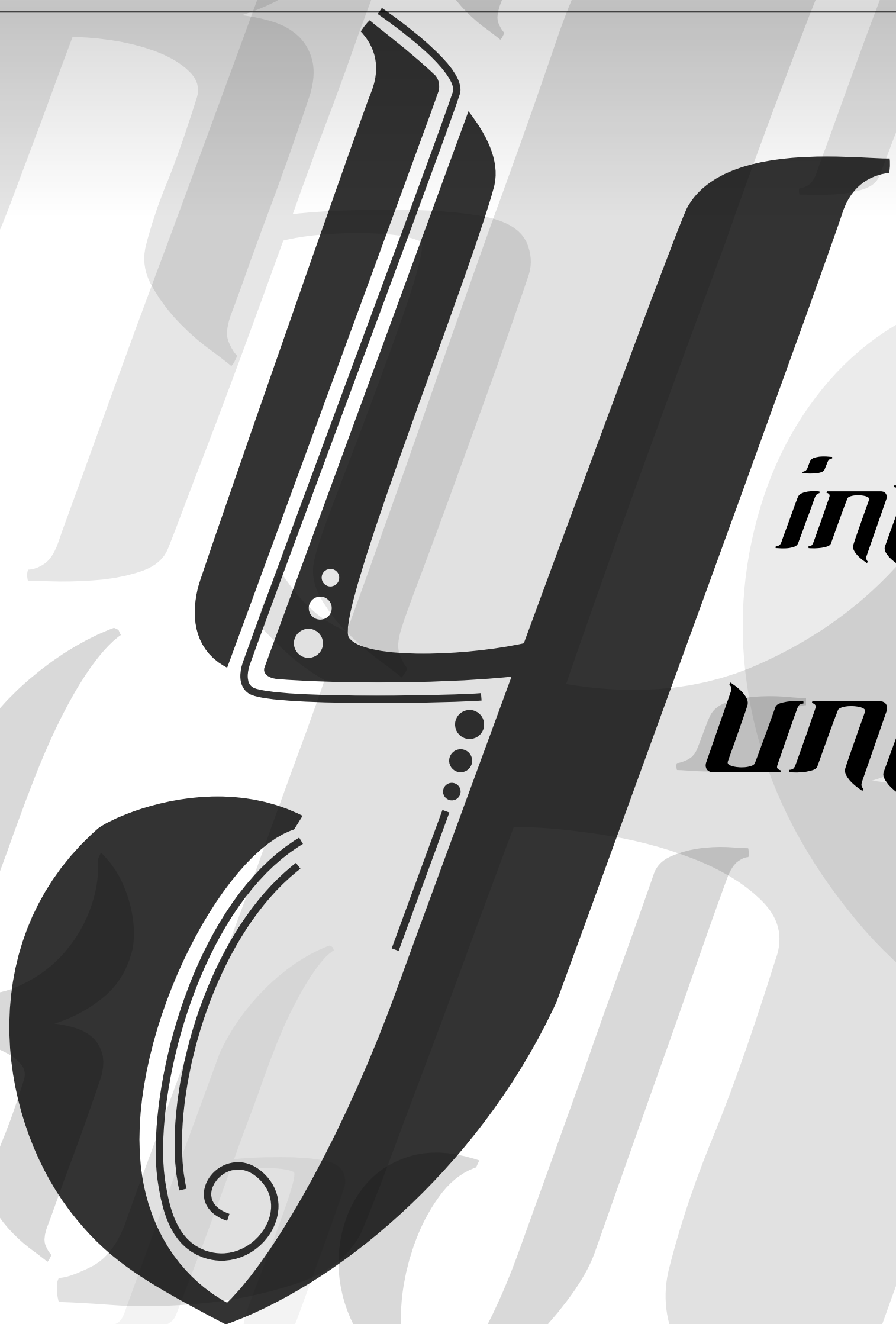
*immersion
into a sea of faces*

*a stereotype
is an image perpetuated
without change.*

*immersion
into a sea of faces*

*a stereotype
is an image perpetuated
without change.*

*immersion
into a sea of faces
unlike your own*



*a stereotype
is an image perpetuated
without change.*



*immersion
into a sea of faces
unlike your own
necessitates a
perspective shift...*

*a stereotype
is an image perpetuated
without change.*



*immersion
into a sea of faces
unlike your own
necessitates a
perspective shift...*

*a stereotype
is an image perpetuated
without change.*



*immersion
into a sea of faces
unlike your own
necessitates a
perspective shift...*

*a stereotype
is an image perpetuated
without change.*



*immersion
into a sea of faces
unlike your own
necessitates a
perspective shift...*

*a stereotype
is an image perpetuated
without change.*



*immersion
into a sea of faces
unlike your own
necessitates a
perspective shift...*

g

a strain



a strain



*a strain
to understand*



*a strain
to understand*



*a strain
to understand
the new normal.*



*a strain
to understand
the new normal.*



*a strain
to understand
the new normal.*



*a strain
to understand
the new normal.
incongruence*



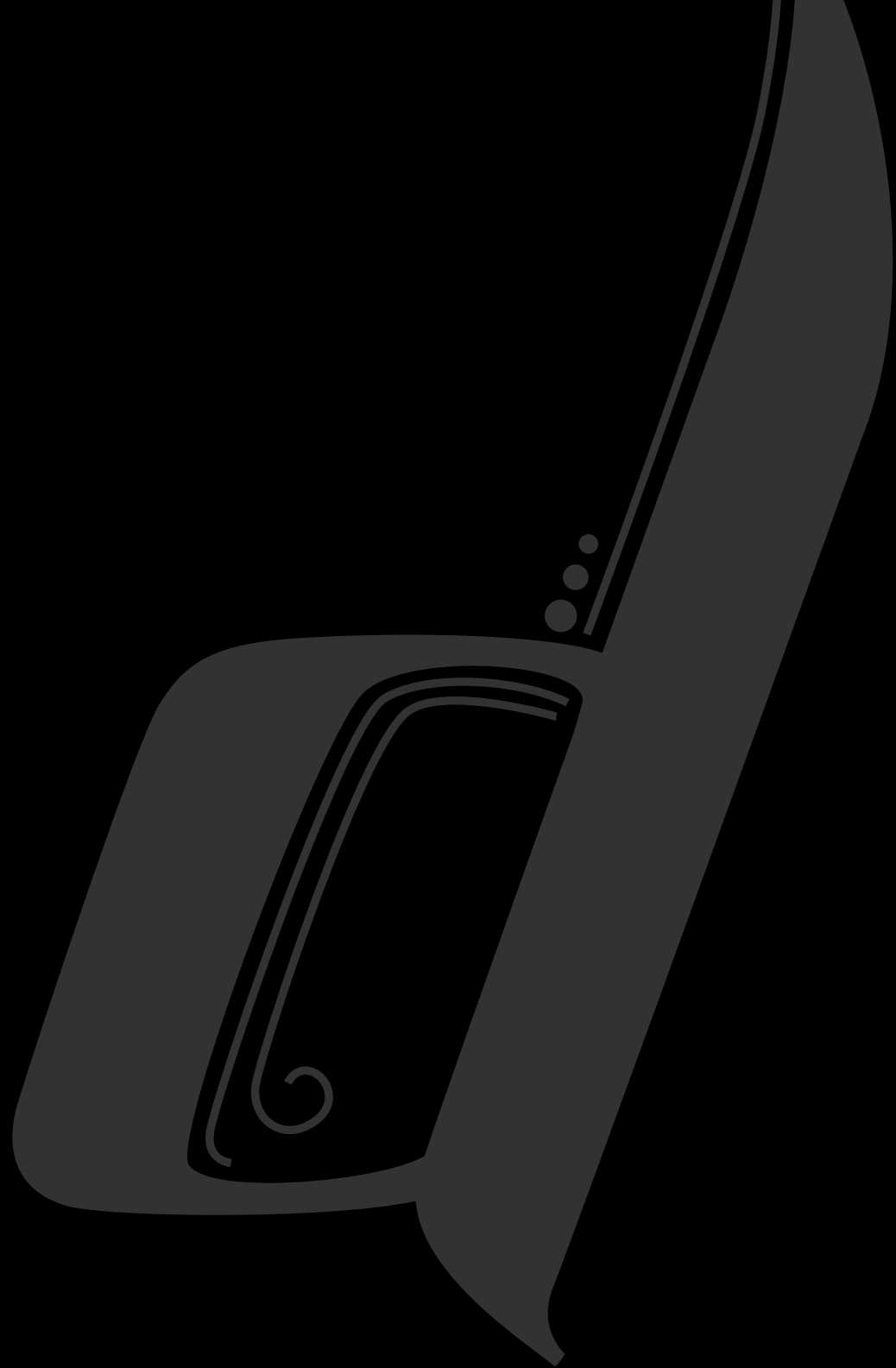
*a strain
to understand
the new normal.
incongruence*

*a strain
to understand
the new normal.
incongruence
in what*

*a strain
to understand
the new normal.
incongruence
in what*

*a strain
to understand
the new normal.
incongruence
in what
is observed and experienced*

*a strain
to understand
the new normal.
incongruence
in what
is observed and experienced*



begins to resolve



begins to resolve



*begins to resolve
into a situation*



*begins to resolve
into a situation*



*begins to resolve
into a situation
that requires*



*begins to resolve
into a situation
that requires*

*begins to resolve
into a situation*

that requires

*a changed
point of view*

*begins to resolve
into a situation
that requires
a changed
point of view*

*begins to resolve
into a situation*

that requires

a changed

point of view

to comprehend.

*begins to resolve
into a situation*

that requires

a changed

point of view

to comprehend.

*begins to resolve
into a situation*

that requires

a changed

point of view

to comprehend.

concepts

*bb
pp
qq*

concepts

pdq

concepts like

community



concepts like

community



concepts like

community and

hospitality

concepts like

community and

hospitality

concepts like

community and

hospitality

take shape into an

concepts like

community and

hospitality

take shape into an

unexpected

concepts like

community and

hospitality

take shape into an

unexpected

concepts like

community and

hospitality

take shape into an

unexpected

living form

concepts like

community and

hospitality

take shape into an

unexpected

living form

concepts like

community and

hospitality

take shape into an

unexpected

living form

concepts like

community and

hospitality

take shape into an

unexpected

living form

*that
affects*



*that
affects*

change

*that
affects*

change

*that
affects*

change

*that
affects*

change

*that
affects*

change

*that
affects*

change

*that
affects*

change
*in
yourself*

*that
affects*

change
*in
yourself*

*and
your*

*sphere of
influence.*

*that
affects*

change

*in
yourself*

*and
your*

sphere of

influence.

*that
affects*

change

*in
yourself*

*and
your*

sphere of

influence.

*that
affects*

*change
in
yourself*

*and
your
sphere of
influence.*

*that
affects*

change

*in
yourself*

*and
your*

sphere of

influence.

*that
affects*

change

*in
yourself*

*and
your*

sphere of

influence.

*that
affects*

change

*in
yourself*

*and
your*

sphere of

influence.

the questions



*the
questions*

*that you
ask*



*the
questions
that you
ask*



*the
questions
that you
ask
show*

*the
questions*

*that you
ask*

show

*in what
way*

*the
questions*

*that you
ask*

show

*in what
way*

*the
questions*

*that you
ask*

show

*in what
way*

you

*the
questions*

*that you
ask*

show

*in what
way*

you

*the
questions*

*that you
ask*

show

*in what
way*

you

will act.

*the
questions*

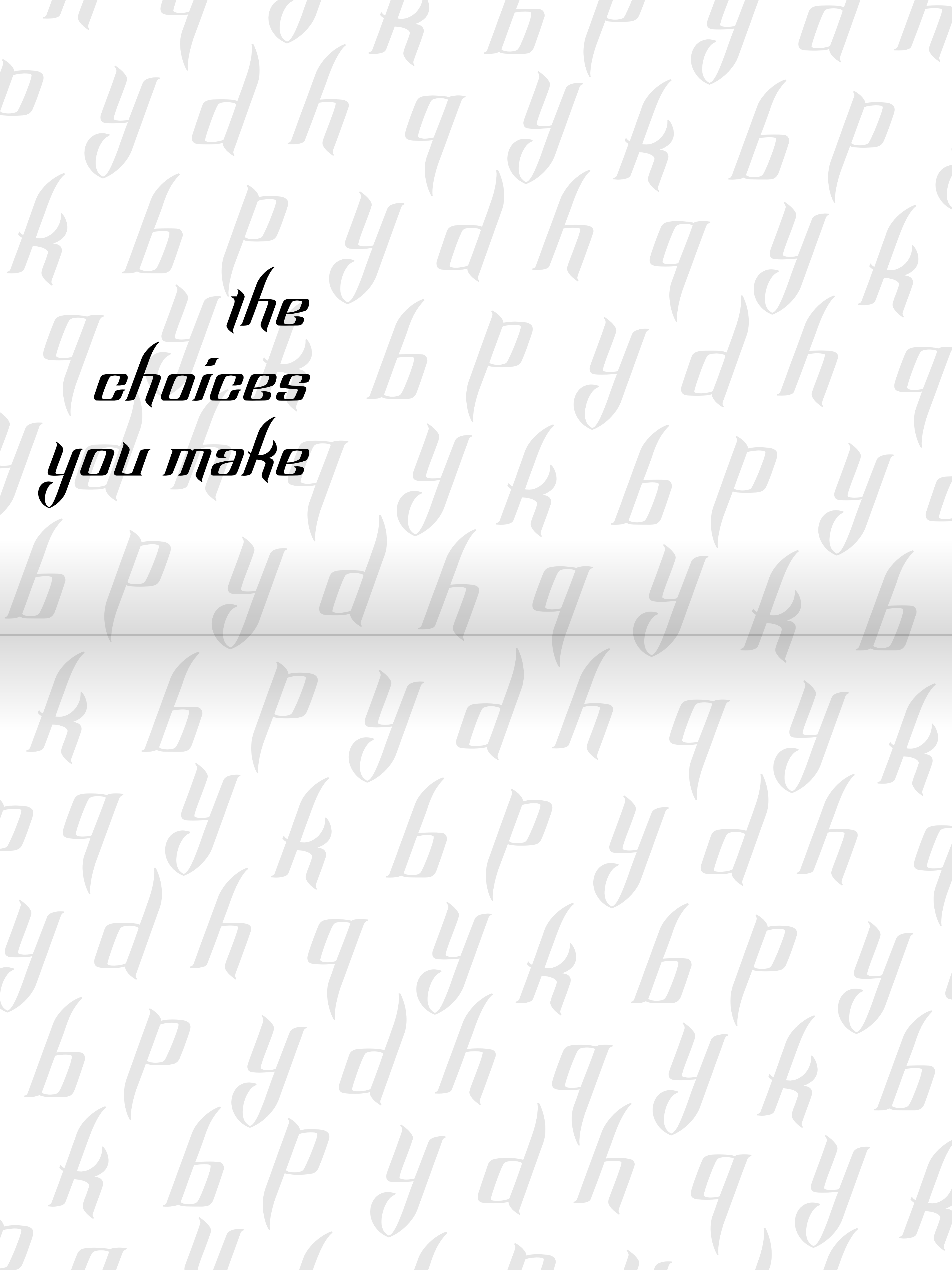
*that you
ask*

show

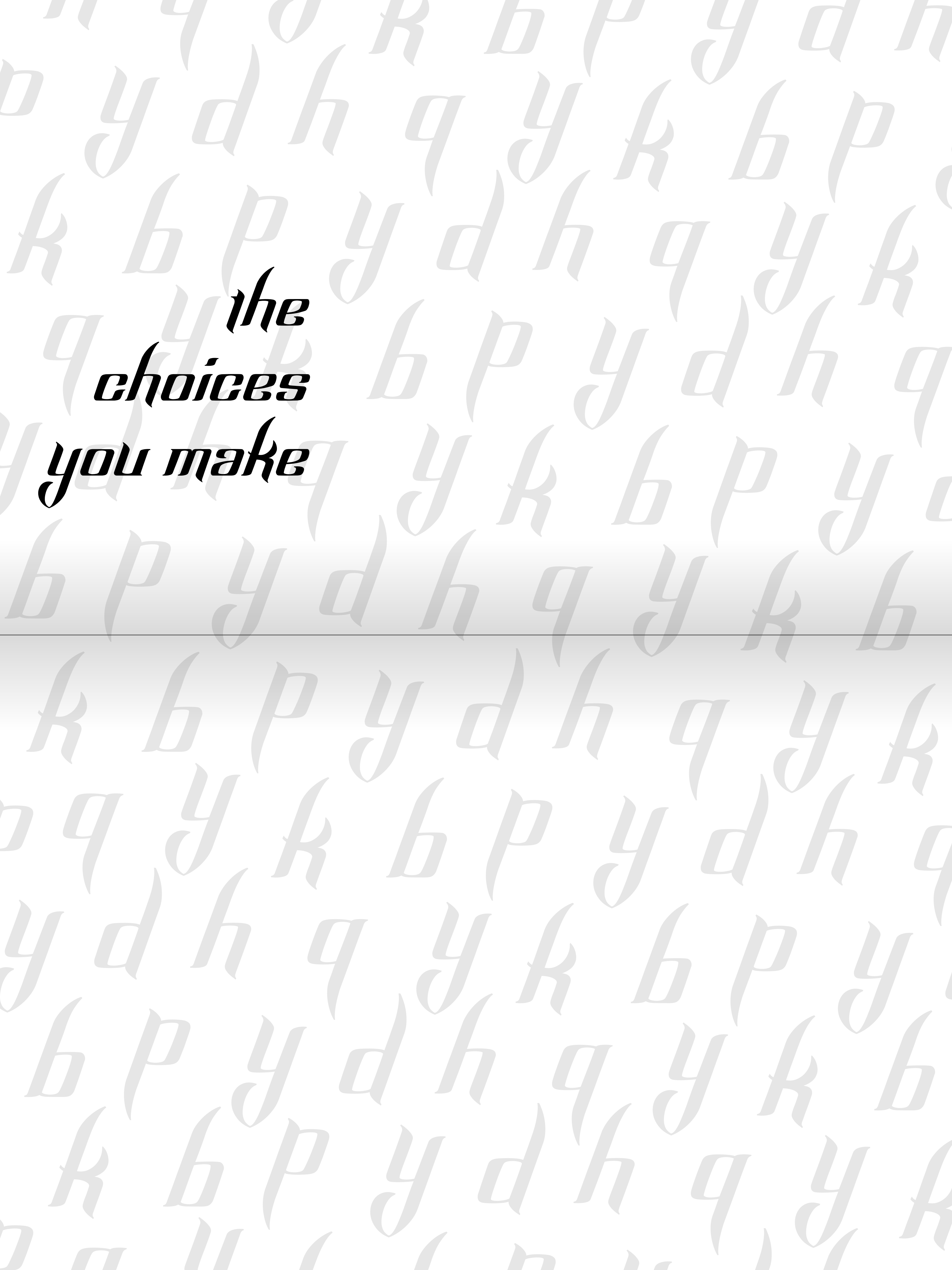
*in what
way*

you

will act.



***the
choices
you make***



***the
choices
you make***

*the
choices
you make
reveal the*

filters



*the
choices
you make
reveal the*

filters

*the
choices
you make
reveal the*

Filters



*the
choices
you make
reveal the*

filters

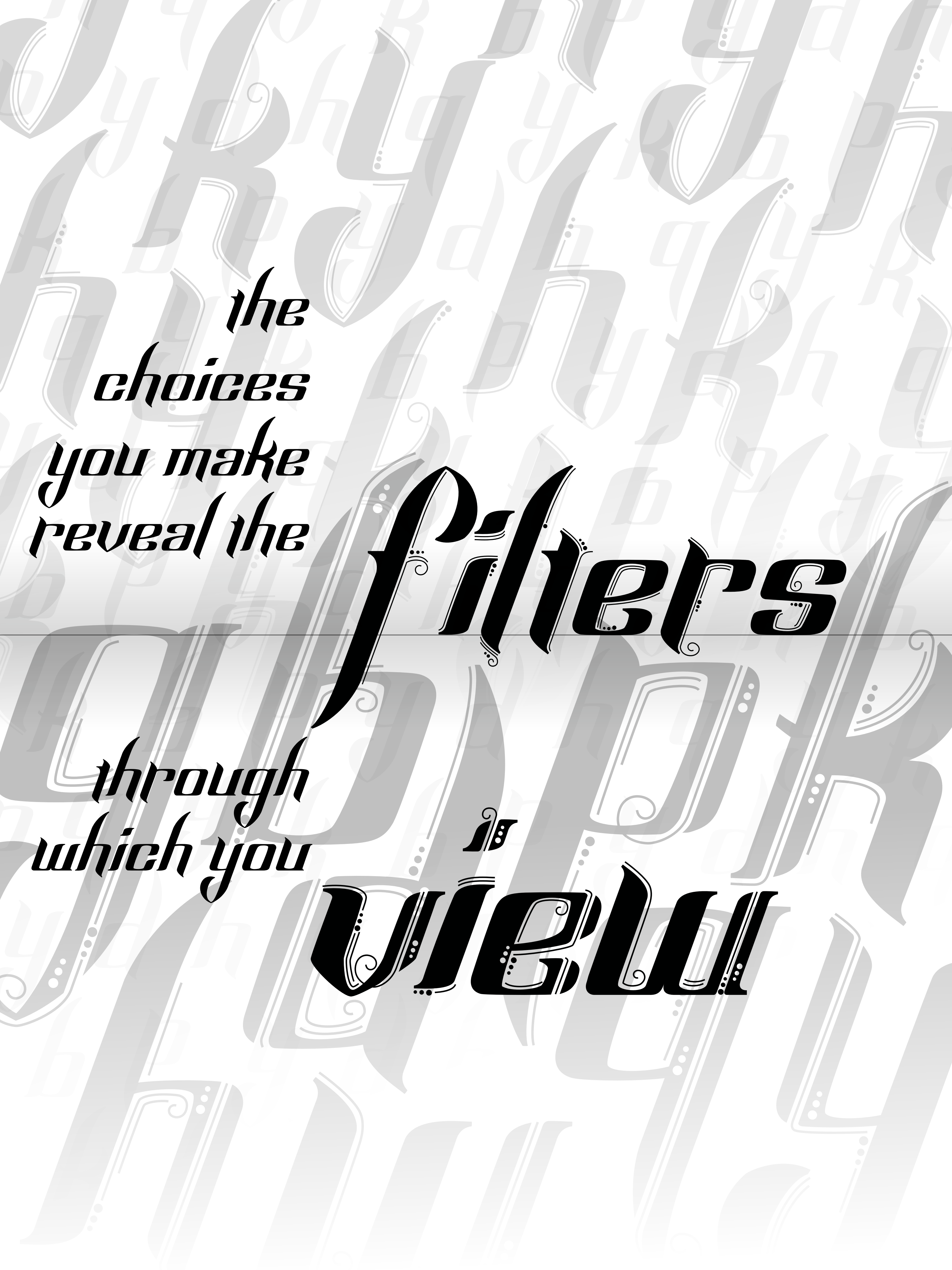
*through
which you*

*the
choices
you make
reveal the*

filters

*through
which you*

view

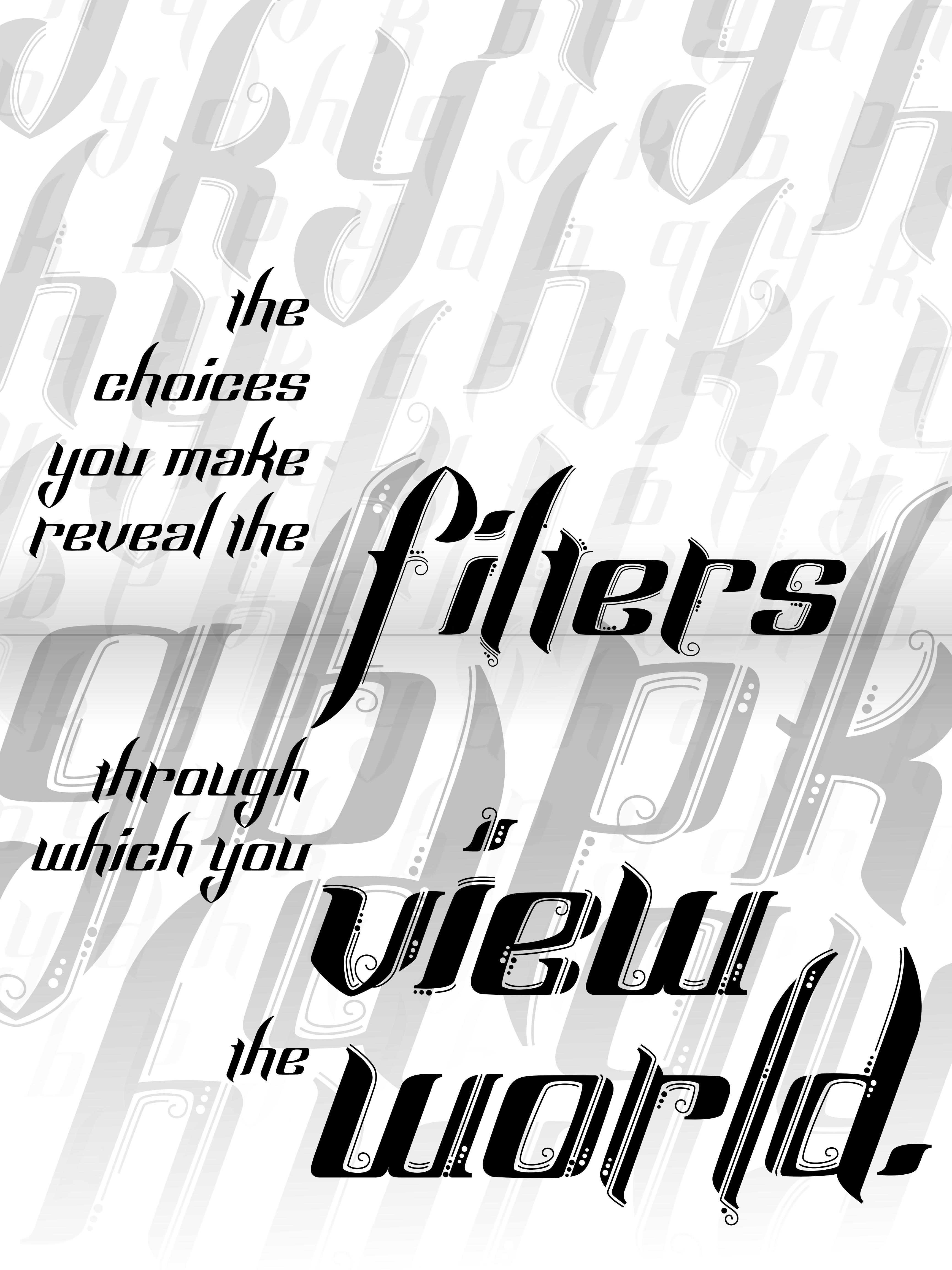


*the
choices
you make
reveal the*

filters

*through
which you*

view



*the
choices
you make
reveal the*

filters

*through
which you*

view

the

world.

*the
choices
you make
reveal the*

filters

*through
which you*

view

the
world.

*the
choices
you make
reveal the*

filters

*through
which you*

view

the
world.

*the
choices
you make
reveal the*

filters

*through
which you*

view

the
world.

*the
choices
you make
reveal the*

filters

*through
which you*

view

the
world.

*the
choices
you make
reveal the*

filters

*through
which you*

view

the
world.

*the
choices
you make
reveal the*

filters

*through
which you*

view

the

world.

*the
choices
you make
reveal the*

filters

*through
which you*

view

the

world.

